



**POLSKIE KOPALNIE SKARBOWE
NA GÓRNYM ŚLĄSKU**



SHARP BOTTLE



**POLSKIE KOPALNIE SKARBOWE
NA GÓRNYM ŚLĄSKU**

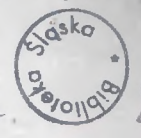
SOCIÉTÉ FÉDÉRALE DES MINES FISCALES DE L'ÉTAT POLONAIS EN HAUTE-SILÉSIE

SL 3d2a



K 319780
657446 III

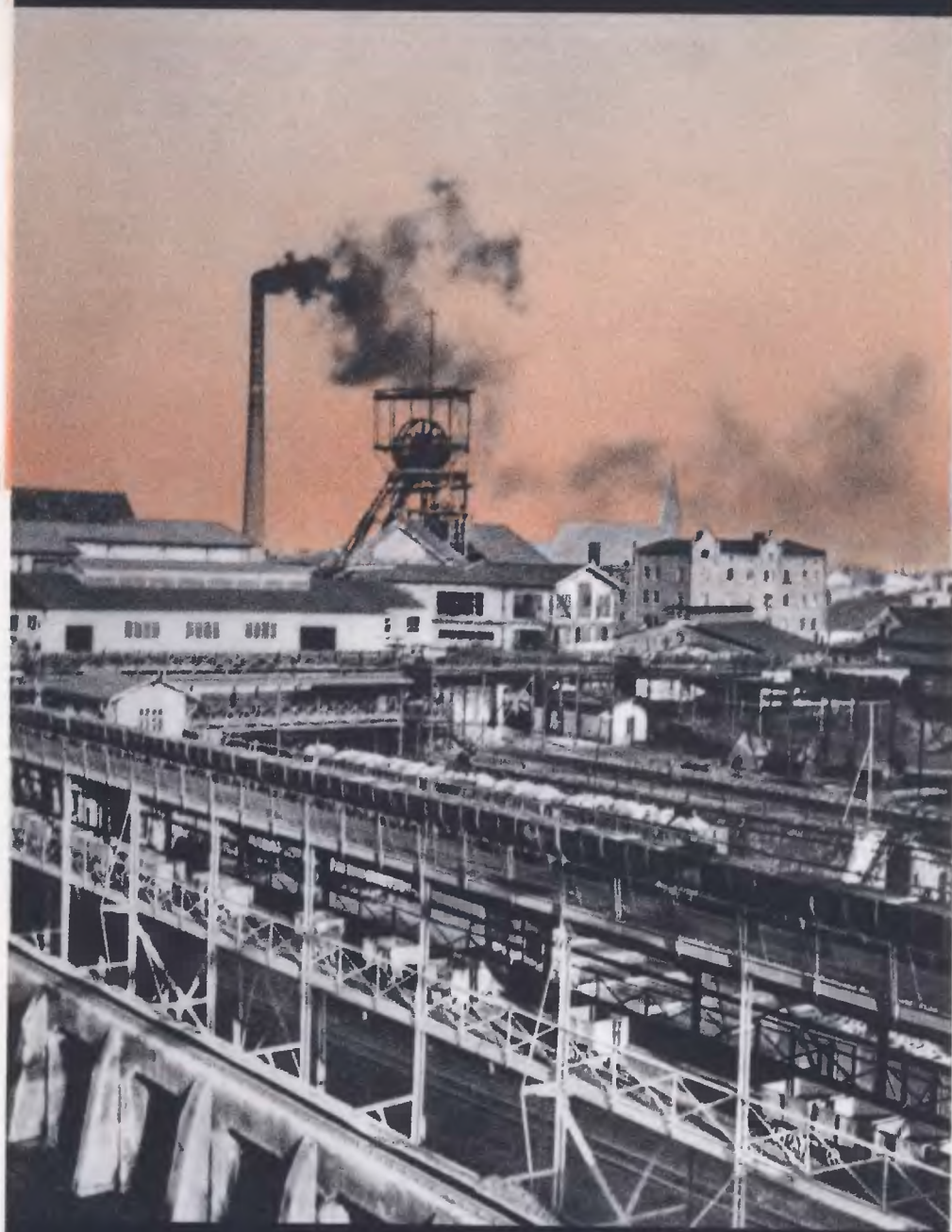
D-03/749/30



707 2

SKARBOFERME

The Polish State Mines – in brief Skarboferme – is a leaseholding Company with Polish French capital. Skarboferme was founded in the year 1922 with the aim of exploiting coal fields, situated in Polish Upper Silesia, and belonging to the Polish State. In these rich fields, at present being worked by Skarboferme, coal had been procured, and known for more than a hundred years, so that Skarboferme's biggest mine Król (King Mine) is one of the oldest in Upper Silesia and dates back about 150 years.



COLLIERIES

Skarboferme exploits
the following collieries:

- a) P R E S I D E N T M O Ś C I C K I
(K I N G E A S T F I E L D M I N E)
at Chorzów
- b) S T. B A R B A R A A N D W Y Z W O L E N I E
(K I N G N O R T H - W E S T F I E L D M I N E)
at Chorzów
- c) B I E L S Z O W I C E
at Bielszowice
- d) K N U R Ó W - P E T E R & P A U L
at Knurów
- e) K N U R Ó W - F O C H
at Knurów





INDUSTRIAL UNDERTAKINGS

Skarboferme besides coal mines, works the following industrial enterprises which aim at turning the coal procured into these refined coal products:

- a) a brickets factory at the King East Field Mine at Chorzów,
- b) coke furnaces at the Peter & Paul at Knurów,
- c) a factory for by-products from the coke furnaces at Knurów,
- d) a factory of synthetic ammonia at Knurów.





SHARE IN THE PRODUCTION OF COAL AND COKE

Skarboferme is one of the largest producers of coal in Poland. Her share in the production of coal amounts to 11% of the coal produced in the whole of Poland. The average yearly production in the Skarboferme mines amounted to nearly four million tons, and capacity of production could be brought up to 8 million tons yearly. Skarboferme's production of coke amounted to an average of 350.000 tons yearly i. e. over 20% of the whole of Poland's production.



IMPROVEMENTS INTRODUCED

From the time Skarboferme took over the working of mines and factories – these have been improved and modernised to such an extent that at present they are considered the most up-to-date mines and factories not only in Poland, but in Europe. Of the most important investments must be emphasised the rebuilding of the President Mościcki and Wyzwolenie – North Field Mines, next the rebuilding of the Knurów-Foch Coal Mine, which was the first mine in Poland having four-ton cars underground, the providing of the Bielszowice mine with a 4 ton Skip, the first pneumatic coal-washer in Poland installed at Bielszowice, also the building of the first synthetic ammonia factory in Poland – at Knurów.



CHIEF PRODUCERS OF COAL IN EUROPE
OUTPUT OF COAL — POLAND'S PLACE IS FIFTH, COAL IN STOCK — POLAND'S PLACE IS THIRD,
EVERY EIGHTH TRUCK OF COAL IN POLAND COMES FROM THE SKARBOFERME MINE.



NEW MINES

At the end of the year 1932 Skarboferme finished rebuilding and started the working of the President Mościcki Coal Mine giving possibility of a production of 8000 tons in two shifts. This mine provided with the newest extracting plant – the Skip system which allows of an extraction of ten tons at a time. In the year 1937 Skarboferme started working the Wyzwolenie Coal Mine – King North Field, fitting it with the most up-to-date mining Plant.



SKARBOFERME COAL

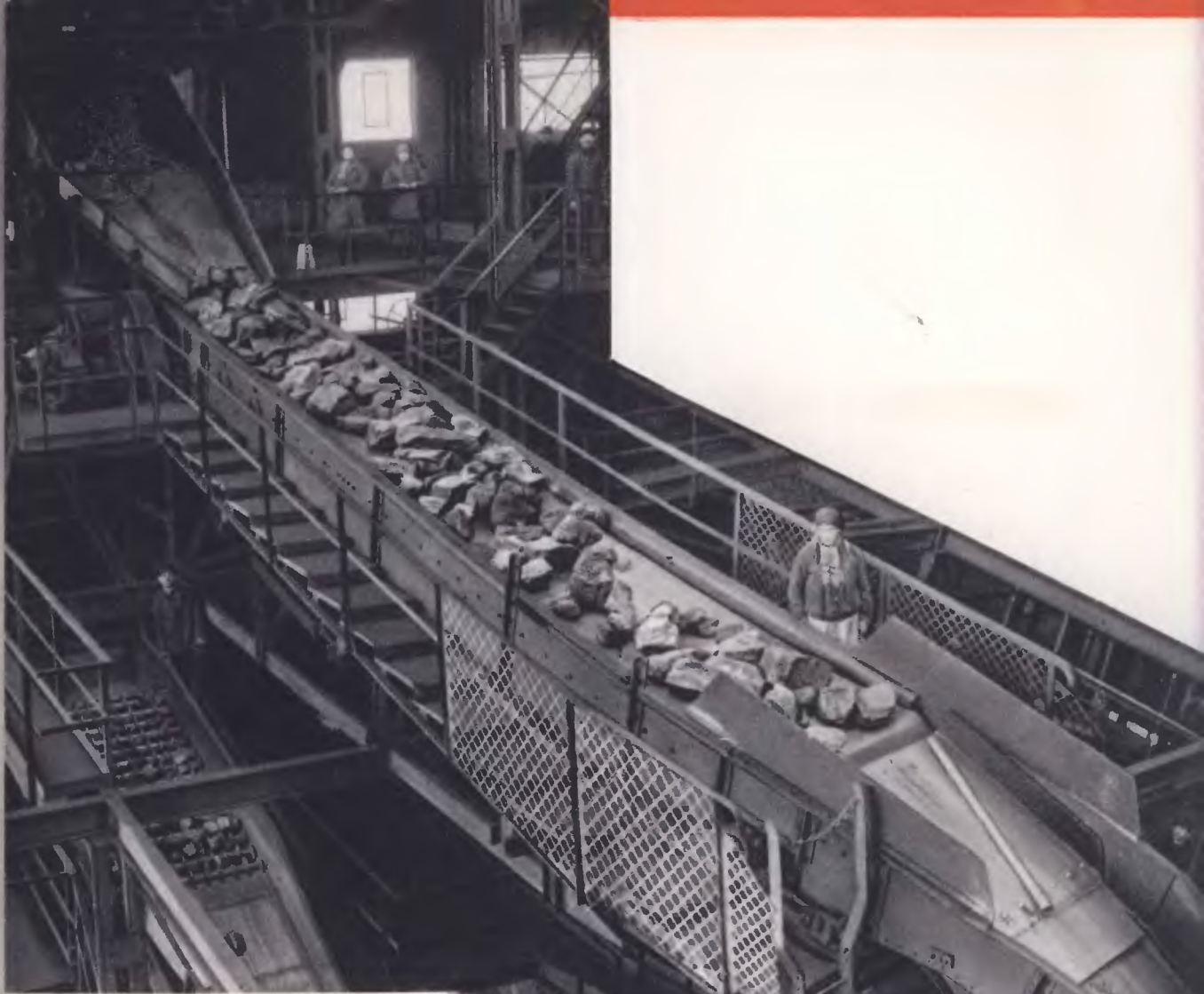
The Skarboferme coal is of the highest grade of Silesian coal according to the classification of the Polish Coal Convention. Owing to the high quality and great variety of assortment, the Skarboferme Coal is known as a first rate industrial and heating coal. It is used in every branch of industry such as in many boilers of different types, many lime-kiln's cement factories, earthenware and china furnaces, gas works etc... It is widely used for house heating. The Skarboferme Coal as regards caloric value, ash contents, and volatile parts is most like English Yorkshire Coal.

Characteristics of Skarboferme's Coal

Orientation datas dependent on assortments.

Mine	Lower value of heat calories	Humidity %	Volatile parts %	Ashes %	Character
King	to 7.300	5—7	31—34	3—8	very hard
Bielszowice	to 7.600	3—5	30—35	3—5	hard
Knurów	to 7.500	3—5	29—31	3—8	hard





SCREENING

Skarboferme pays special attention to the mechanical breaking-up of coal with the aim of supplying it to customers in the purest condition, perfectly screened and graded into many varieties.

Sizes of coal Assortments in mm.

Assortment Mine	Large coal	Cobbles		N u t s			Peas	Slack		Dust	Non screened
		I	II	I	Ia	II		I	II		
King East Field	over 150	110-150	70-110	40-70	—	20-40	10-20	0-70	—	0-10	
King West Field	110	—	70-110	40-70	—	20-40	10-20	0-70	0-40	0-10	
King North Field	150	110-150	70-110	40-70	—	20-40	10-20	0-70	0-40	0-10	
Bielszowice	120	90-120	70-90	50-70	35-50	20-35	10-20	0-70	0-35	0-10	
Knurów	110	—	—	30-70	—	20-30	10-20	0-70	0-30	0-10	

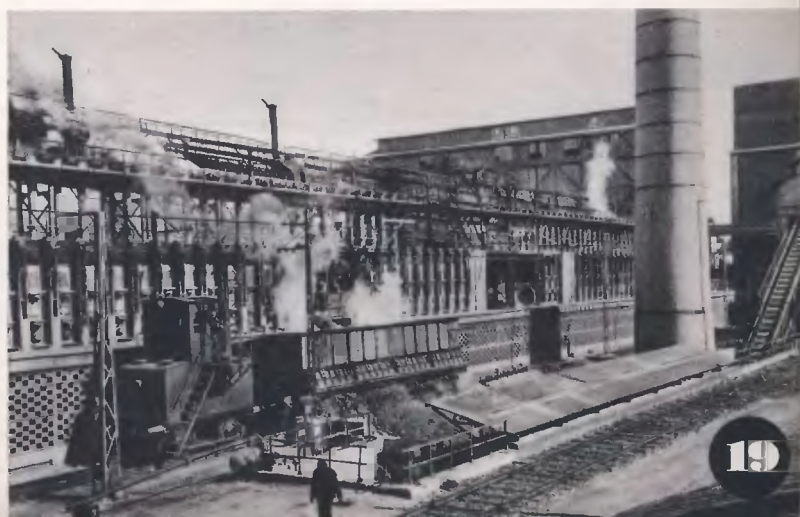


GAS COAL AND COKE

The Knurów Mine supplies coking-coal, which is largely used in the production of coke in her own furnaces, as well as in many gas-works in Poland and abroad for lighting-gas and coke productions. The Skarboferme Coke, of first rate quality is used in large smelting furnaces, in foundries, in different branches of industry, as well as for house-heating.

C O K E

Assortments:	Characteristics:
large over 80 mm	data for orientation
cobbles I . . . 60-80 "	large coke assortment
cobbles II . . 40-60 "	humidity 2-4%
nuts I 25-40 "	ashes 7,5%
nuts II 16-25 "	sulphur 0,7%
peas 6-16 "	heating value
grains 0- 6 "	7000-7300 calories





THE COKE FURNACES AT KNURÓW

Skarboferme works large coke furnaces as well as chemical works at Knurów, near the mine of the same name. The coke furnaces consist of four batteries and have altogether 228 chambers. It has been in recent years completely rebuilt and fitted up with the most up-to-date mechanical contrivances. Among other things there has been built a special tower for the rational extinction of smouldering coke, thanks to which the moisture in the Skarboferme coke has been considerably lowered. The coke furnaces have two new screening plants, making it possible to produce pure coke of very even grain in different assortments. By-products — obtained in the making of coke — such as benzol and raw tar — are sent for further treatment to Związek Koksowni Sp. z o. o. — the Union of Coke Furnaces Ltd at Katowice, and are sold directly through this Company.





AZOTE PRODUCTS

Since the year 1927 Skarboferme has been working a large synthetic ammonia factory. The manufactured ammonia is then made up and sold as sulphate of ammonia and liquid ammonia. The sulphate of ammonia is of excellent quality, produced as a white dry, neutralized salt, containing 21% of azote. The yearly production of ammonia amounts to over 4.000 tons and the sulphate of ammonia to about 18.000 tons. Very much sulphate of ammonia is sold abroad.





SKARBOFERME'S OWN RELOADING PLANT IN GDYNIA

Skarboferme owns in the port of Gdynia special machinery for the direct loading of coal from truck to ship. The reloading plant is the newest arrangement not only at Gdynia, but along the whole Baltic. It is fitted with dump-cars with belt-conveyor which brings the coal direct to the hold of the ship, thus preventing the crushing of the coal. The capacity of the loading contrivance amounts to 600 tons per hour. Business connected with reloading of coal is managed by Skarbopol Ltd at Gdynia – a company especially formed for this purpose. Skarboferme owns besides a bunker ship which allows of ships in the open sea being supplied with coal.





FOREIGN MARKETS

The Skarboferme coal and coke has gained much popularity in the foreign markets and is exported to over 22 European countries, besides to several States in Africa, South America, Asia Minor, and the Far East. Over 50% Skarboferme's coal output is sent abroad and is, as regards productions, the



greatest exporter in Poland. Skarboferme is besides this the largest supplier of bunker coal – i. e. coal used as fuel in steamships. The Skarboferme bunker coal is supplied to the biggest steamship lines of the world and reaches even the Far East – to China and Australia.



ANSALDO

UNIONE ANONIMA CAPITALE 500.000 L. 100.000.000 - SEDE SOCIALE: TORINO
DIREZIONE CENTRALE - VIA S. A. MARIANO, 7 - SEDE SOCIALE: TORINO

SPETT. SINDACATO ITALIANO COMBUSTIBILI
per il tram. SIG. AVV. R. DI NITTI
presso Assessorati, 2
FR/ma SCU. 162/11

4/2 - 7 IV
ROCHONNE
PRODIGANDA
SKARBOWSKA

In relazione alla stime
vostra del 22/1 u.s., non abbiamo difficoltà a
dichiararvi che il carbone Splint "SKARBOWSKA"
polacco, usato normalmente dai ns. Stab. II, è
risultato di buon rendimento nei vari impieghi
ai quali è stato destinato.
Distinti saluti.

"ANSALDO, Società Anonima"
[Signature]

**SANDVIKENS JERNVERKS
AKTIEBOLAG**

TELEFONER
SANDVIKENS 810 (SOLINGEN)
TELEFONER
SANDVIKENS 810 (SOLINGEN)

Dear Sirs,
In answer to you
give you the following in
The Skarboerme coal from your works Bielassowie we have
used for several years in our steelworks to our full satis-
faction.

Yours truly,
[Signature]

ZEBRUGGE COAL BUNKERING STATION S.A.

Siege Social: ZEBRUGGE Belgique
Siege d'Exploitation
ZEBRUGGE-TOILE
Tél. 97
SIEGE COMMERCIAL
SIEGE ADMINISTRATIF
et Commercial
SIEGE CENTRAL
SIEGE LOCAL
SIEGE LOCAL
SIEGE LOCAL

Generaldirection
der
Österreichischen Bundesbahnen
Z 23/5
100, 304
alle im Anschluss an die Besondere
1000/100

Polskie Kopalnie Szarbowe na Gornym Slasku
Spolka Akcyjna
Krolewska Huta
Rynek 9 - 1B.

Über Ihren Wunsch bestätigen wir, dass die Österrei-
schen Bundesbahnen Kohlen aus den Schächten Kóna I g r u b e,
R h e i n b a b e n und K n u r o w seit Jahren beziehen und
mit denselben zufrieden sind.
zu Österreichische Bundesbahnen

"IVA" S.P.A. S.P.A. S.P.A. S.P.A.
S.P.A. S.P.A. S.P.A. S.P.A.
S.P.A. S.P.A. S.P.A. S.P.A.

25 Gennaio
Spettabile
S. A.
Via del...

A stia. vs/ 22 cov
Abbiamo commentato
Skarboerme attenzione soddisfacente
Oreste i ns. 01

Anders Lager
B
The good service that
these quiet
PUSH, MEET,
FA/IK

Dear Sirs,
As we have been requested to live our
opinion about the SKARBOWSKA coals, we are pleased
to state that we have been using for many years
comparatively large quantities of these coals in
works and that they have always turned out to be
complete satisfaction.
Yours faithfully
[Signature]

**MINISTERO
DELLE COMUNICAZIONI**

DIREZIONE GENERALE
Serr. Approvvigionamenti
Sezione IV

Roma 23 febbraio 1934
A. 24/2/3074

OGGETTO Spett. POLSKIE KOPALNIE SZARBOWE NA
GORNIM SLASKU **O R E S E N I**

In relazione alla richiesta fattasi con
la lettera del 13 corrente, non abbiamo difficoltà
a dichiarare che codesta Ditta fin dal marzo 1934
è stata normale fornitrice di carbone per l'Ammi-
nistrazione delle Ferrovie Italiane dello Stato ed
autorizziamo l'immersione al tale dichiarazione
nel vostro catalogo commerciale.

IL CAPO DEL SERVIZIO
[Signature]

**TOWARZYSTWO
SZARACHOWICKICH ZAKLADÓW GÓRNICZYCH SP. AKC.**

Polskie Kopalnie Szarbowe
na Gornym Slasku
Górnow I
ul. Katowicka 28.

Ziniejszym stwierdzamy, że od szeregu
lat używamy do naszych produkcji węgla z
kopalni Szarbowe i w codziennych rezultatach
spalania jesteśmy całkowicie zadowoleni.

E powiadomiamy
Inzyniera Szarbachowickich Zakladow Gorniczych
i Spolki Akcyjnej
[Signature]

IMPORTANT CUSTOMERS

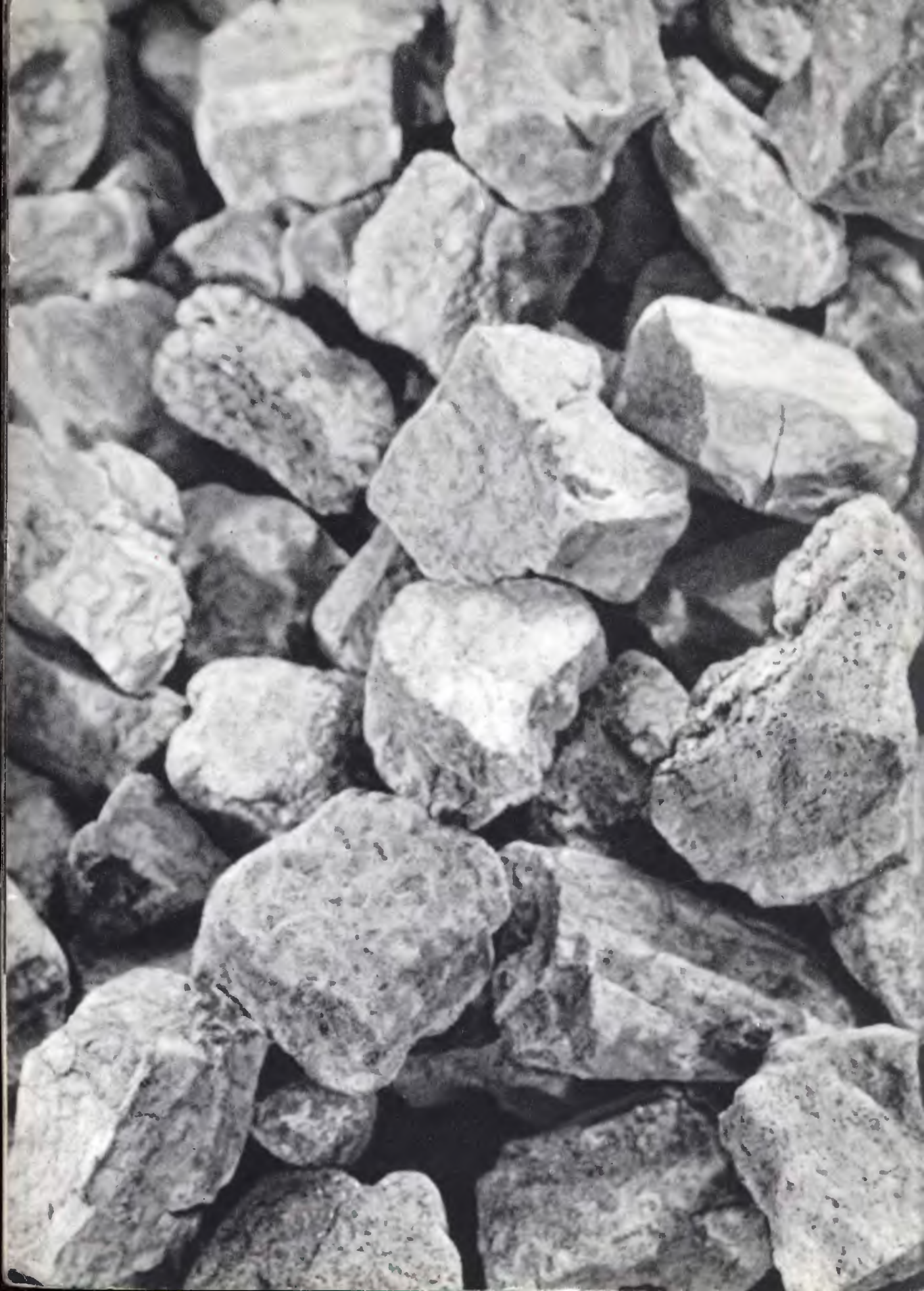
Among Skarboferme's best customers at home, as well as abroad, are the State railways of Poland, Austria, Switzerland, Sweden, Denmark, Italy, Norway, Finland and Latvia. Great Central Electric Works in Belgium, Holland, Greece and the Argentine. Besides Skarboferme has supplied her coal for very many years past to the great metallurgic enterprises, as well as to several sugar factories, cement factories, lime kilns, and to very many other industries at home and abroad. Skarboferme's coal is recognised and valued among all customers of Polish coal and continuous development of its sales gives best testimony of its value.






POLSKIE KOPALNIE SKARBOWE NA GÓRNYM ŚLĄSKU S. A.
SOCIÉTÉ FERMÈRE DES MINES FISCALES DE L'ÉTAT POLONAIS EN HAUTE-SILÉSIE

CHORZÓW I., PLAC MARSZAŁKA PIŁSUDSKIEGO 9-12
TELEPH. NR 409.01 – TELEGRAMS: „SKARBOFERME” – CHORZÓW





PROJ. S. DALSKA
DRUKARNIA NARODOWA
W KRAKOWIE

Biblioteka Śląska w Katowicach

ID: 0030001024246



III 657446

SL



Handwritten signature or mark